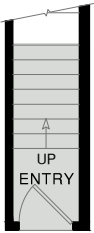
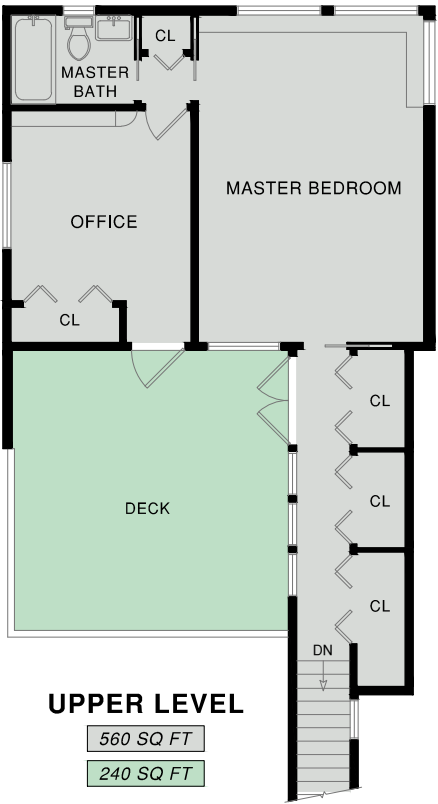


2864 JACKSON STREET

SAN FRANCISCO, CA

2,720 TOTAL
LIVABLE SQ FT



MAIN LEVEL
2,160 SQ FT

UPPER LEVEL
560 SQ FT
240 SQ FT

NOTE: SQ FT DATA HAS BEEN DERIVED PER THE **INTERIOR** FACE OF ALL BOUNDARY WALLS.

NOTE: SQ FT FIGURES ARE ESTIMATES ONLY AND HAVE BEEN DERIVED SIMPLY FOR THE MARKETING-STYLE FLOOR PLANS DEVELOPED BY OPEN HOUSE DRAFTING.